



ISTITUTO ITALIANO
DI TECNOLOGIA

TITLE

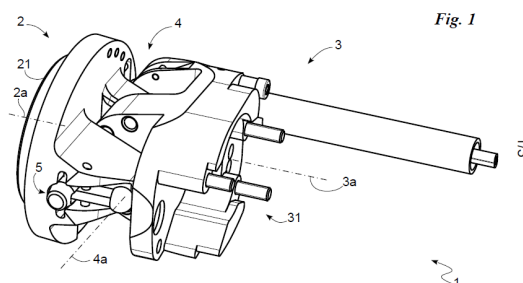
Artificial wrist

INVENTORS

Simone TRAVERSO, Andrea LINCE, Matteo LAFFRANCHI, Lorenzo DE MICHELI

DESCRIPTION

The present invention relates to a wrist. In particular, the invention is suitable to be used to connect an end effector (preferably a robotic hand or other protetic device) to a support (such as a suitably protean robotic arm) allowing a mutual motion between the end effector and the support.



APPLICATIONS

Prosthetics, Industry

KEYWORDS

Prosthetic wrist, flexion, extension, compression spring, cables, pulleys, mechanical block

BIBLIOGRAPHIC DATA

Polso Artificiale

Application Number IT 10201800003961

Priority Date March 26, 2018

Applicants Fondazione Istituto Italiano di Tecnologia, Istituto nazionale per l'assicurazione contro gli infortuni sul lavoro

CONTACTS

Technology Transfer Office

Matteo Faccenda

Matteo.faccenda@iit.it

+39 010 71781 968